

# MEETING & TRAINING SOLUTIONS

< ROOMS 1 - 8      ROOMS 9 - 16 >



 **MAYLINE GROUP**  
BETTER FOR YOUR BUSINESS™



Meeting Plus Tables shown in Mocha/Taupe with Burnished Chestnut/Taupe Pie Connectors and Transition Tables. Valoré TSH1 chairs available on pg. 14.

Durable, functional, and adaptable best describes our top-of-the-line Meeting Plus tables. Heavy-gauge, welded steel construction and 1 1/8" solid-core surfaces guarantee Meeting Plus will withstand years of constant use.

Meeting Plus features:

- **Wheelbarrow-style mobility utilizing integrated wheels.**
- **Extra-deep cable trough and convenient table-to-table pass thru cord management capabilities within modesty panel.**
- **Transition Tables and Pie Connectors allow for endless room configurations.**
- **Complement your Meeting Plus tables with accessory designs from the Aberdeen Series of REAL Office casegoods.**
- **Available in a choice of over 400 high-pressure laminates from Wilsonart® and Nevamar® with no minimums, upcharges, or extended lead times.**



Open-end trough allows for table-to-table pass thru for cord management.



Optional integrated power/data modules. See page 13.



Meeting Plus shown in Cherry/Black with Black/Black Pie Connectors and Transition Tables. Valoré TSH1 chairs available on pg. 14.

Simple, yet extremely flexible. Whether you need to prepare for an important conference or training session, Meeting Plus responds with its smart new Transition Tables and Pie Connectors that roll into position in just minutes.



Integrated wheels on one foot allow for wheelbarrow-style mobility.



New Transition Tables and Pie Connectors are available for Meeting Plus, Talon®, Flip-N-Go™, and T-Mate product lines. Configuration possibilities are virtually unlimited.



Folding Pin mechanism.



1020FTC Folding Table Cart. Holds up to four tables.

Talon Folding Tables shown in Mocha/Black and Burnished Chestnut/Black Pie Connectors and Transition Tables. Valoré TSH1 chairs available on pg. 14.

Talon Tables combine a striking appearance with the ultimate in flexibility. Available in a choice of folding or nesting designs, Talon adapts at a moment's notice giving you complete control over your meeting and training environments.

Talon features:

- **Talon Folding bases are only 5" wide when fully folded. Bases available in Black only.**
- **Upgraded, heavy-duty pin mechanism easily folds table for compact storage.**
- **Unique, three-tube design carries through both leg uprights and modesty panel.**
- **Transition Tables and Pie Connectors allow for endless room configurations.**
- **Complement your Talon tables with accessory designs from the Aberdeen Series of REAL Office casegoods.**



Mayline's Meeting Plus, Talon®, Flip-N-Go™ and T-Mate tables are Greenguard certified.

Talon Tilt-Top Tables shown in Cherry/Black with Black/Black Pie Connectors and Transition Tables. Valoré TSH1 chairs available on pg. 14.

Interaction and communication are vital to a successful business. Talon allows space to be dynamic and functional, supporting all the required communication requirements.

Talon Tilt-Top features:

- **Simple handle release for easy surface forward tilt.**
- **Base legs (available in black only) are angled allowing tables to nest in a straight line away from wall.**
- **Both Talon table lines are available in a choice of over 400 high-pressure laminates from Wilsonart® and Nevamar® with no minimums, upcharges, or extended lead times.**



Legs designed for compact, straight-line nesting.



Heavy duty casters.



Flip-N-Go Tables shown in Cherry/Black with Black/Black Pie Connectors. Valore TSM2 Chairs available on pg. 15.

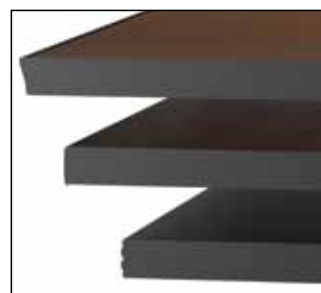


Legs designed for compact, straight-line nesting.



Dual-sided levers for easy flip action.

Introducing Flip-N-Go; Simplistic in design, sophisticated in appearance. This table design will solve all your training and meeting room needs, no matter the budget. It doesn't get any more straightforward than this. Flip the top, nest the base – storage made simple.



Knife-Edge T-Mold, Standard T-Mold and Fluted T-Mold.

Customize your tables to complement your room. High pressure laminate tops can be ordered for Meeting Plus, Talon®, Flip-N-Go and T-Mate tables. Choose from over 400 Wilsonart® or Nevamar® laminates and select one of the three standard edge treatments.



Flip-N-Go Tables shown in Folkstone/Black with Black/Black Transition Table. Valore TSM2 chairs available on pg. 15.

Mobile, nesting tables have become the choice for most organizations. The challenge is finding a line that is well-built, nice looking, and yet affordable. Flip-N-Go tables deliver.

Flip-N-Go features:

- Dual-sided levers provide easy, secure surface tilting.
- Tables roll into position so you can set up your entire room in just minutes.
- Transition Tables and Pie Connectors allow for endless room configurations.
- Integrated cable management trough located on inside of perforated modesty panel.
- Flip-N-Go table frames available in Black only.
- Available in a choice of over 400 high-pressure laminates from Wilsonart® and Nevamar® with no minimums, upcharges, or extended lead times.



Tables can be joined together with optional ganging brackets.



Integrated cable trough in modesty panel for wire management.



Starter-Adder design using shared leg.



Welded tubular steel construction for lasting durability.

T-Mate tables shown in Rhinestone Cowboy/ Taupe, and Pie Connectors shown in Valley of the Sun/Taupe. Valoré TSM2 Chairs available on pg. 15.

T-Mate tables provide the ultimate in affordability and seating access. By sharing legs between adjacent surfaces, T-Mate tables have a clean, open stance with their appealing, tubular leg design. This value-priced table is a great solution for most every training or meeting application.

We realize that no two training rooms are alike; that is why we encourage you to choose the laminate, paint, and edge treatments that best fit your application.



T-Mate tables shown in Folkstone/Black with Black/Black Pie Connectors and Transition tables. Valoré TSM2 Chairs available on pg.15.

T-Mate has been recently improved to now offer optional steel modesty panels as well as Mayline's new Transition Tables and Pie Connectors. Another plus is T-Mate is now available in Mayline's entire corporate finishes program to blend with any office environment.

T-Mate features:

- **Starter tables are freestanding with two legs, while Adder tables come standard with one leg and can be connected to Starter tables in either direction.**
- **New, optional steel modesty panels have a generous cable management trough.**
- **Compliment your T-Mate tables with a broad selection of accessories such as lecterns, A/V carts, and hospitality carts. See pages 12-13 for details.**
- **Available in a choice of over 400 high-pressure laminates from Wilsonart® and Nevamar® with no minimums, upcharges, or extended lead times.**



Optional Steel Modesty Panels available.



Generous trough manages table-to-table cabling.



Half-Round Table.



Crescent tables support multiple room configurations.

Encounter Tables shown in Cherry/Black. Valoré TSM2 Chairs available on pg. 15.

Encounter is a great choice when looking for functional, multi-purpose tables on a limited budget. Encounter provides the basic necessities for promoting big ideas.

Encounter features:

- **Steel frame components connect to laminate surfaces using threaded metal inserts.**
- **Scratch resistant surfaces are protected with a durable PVC edge.**
- **Sturdy, beveled leveling glides provide a nice look and a solid stance.**
- **Available in a choice of Cherry or Folkstone laminates with Black bases.**
- **In stock and available through Mayline's FAST Freight delivery program. Visit [www.mayline.com](http://www.mayline.com) for more information.**

Encounter Tables shown in Folkstone/Black. Valoré TSM2 Chairs available on pg. 15.



Modesty Panels standard on all tables.



Optional Power Modules available. See page 13.



1070PS Console and optional 1075MR Mounting Rack



1010AV Audio/Visual Cart

Accessories

- **Sturdy, perforated black steel side supports.**
- **Heavy-duty, locking casters.**
- **Speckled Anthracite laminated surfaces.**
- **Integrated power modules come standard on Audio/Visual Carts.**



1010PC Presentation Stand

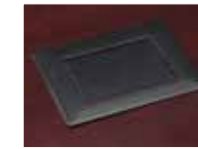


1015HC Hospitality Cart

Optional Power Modules or Power/Data Modules are available on Mayline Meeting and Training Tables.



PM20 Power Module



PMR30 Power Module with 3 Outlets



PMR22 Power and Data Module with 2 Power Outlets and 2 Data Outlets



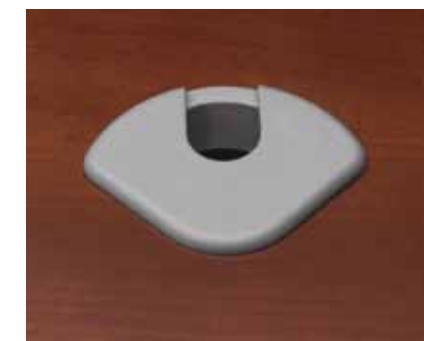
PM22 Power and Data Module



PM44 Power and Data Module with 4 Power Outlets and 4 Data Outlets



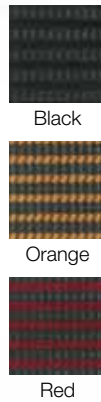
350190 Power/Data Module



F740 Surface Grommet



TSH1 High-back Chair shown in Red.



TSH1 features:

- Comfortable, ergonomic mesh back and padded fabric seat combination with synchro-tilt recline action.
- Seat cushions flip up allowing compact, nesting storage.
- Shipped assembled, 2/carton.
- Available in choice of Black, Orange, or Red mesh back with standard Black fabric seat cushions and Chrome frames.
- CA117 and CA133 approved.
- Meets or exceeds ANSI/BIFMA standards.



Straight row nesting storage.

TSH2 features:

- Same features as TSH1 except without arms.
- Compact size makes it ideal for banquet halls, conference centers and even hotel rooms.
- CA117 and CA133 approved.
- Meets or exceeds ANSI/BIFMA standards.

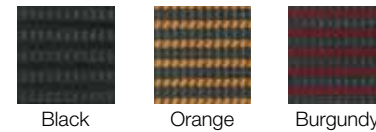


Seat flips up for compact, nesting storage.

TSH2 Chair shown in Black.



TSM2 Chair shown in Orange.



TSM2 features:

- Stylish mesh backs with padded fabric seat cushions. Integrated arms are standard.
- Seat cushions flip up allowing compact, nesting storage.
- Shipped assembled, 2/carton.
- Available in choice of Black, Orange, or Burgundy mesh back with standard Black fabric seat cushion and Silver powder coat frame.
- Meets or exceeds ANSI/BIFMA standards.



Compact storage solution.



Optional Chair Glides for Valoré line of training seating. Set of four.



For a complete offering of Mayline Seating visit [www.mayline.com](http://www.mayline.com)



Printed on Forest  
Stewardship Council  
certified paper

#### CORPORATE LOCATIONS

MAYLINE COMPANY, LLC  
619 N. COMMERCE STREET  
PO BOX 728  
SHEBOYGAN, WI 53082-0728  
**CUSTOMER SERVICE 800-822-8037**  
920-457-7388 (FAX)

KWIK-FILE, LLC  
490 NORTHCO DRIVE NE  
MINNEAPOLIS, MN 55432  
**CUSTOMER SERVICE 800-822-8037**  
920-457-7388 (FAX)

TO PLACE ORDERS:  
MAYLINE GROUP  
ATTN: ORDER DESK  
PO BOX 728  
SHEBOYGAN, WI 53082-0728  
**800-822-8037**  
920-457-7388 (FAX)

#### DISTRIBUTION CENTERS

**NORTHERN CALIFORNIA**  
468 SOUTH ABBOT AVENUE  
MILPITAS, CA  
408-627-4331

**ARKANSAS**  
824 NORTH PALM STREET  
NORTH LITTLE ROCK, AR  
800-480-3123

# MAYLINE® GROUP

www.mayline.com

TFTBL 9/09

#### SHOWROOM LOCATIONS

**CHICAGO**  
MERCHANDISE MART, SUITE 1147  
CHICAGO, IL  
847-952-1213

**NEW YORK**  
200 LEXINGTON AVE., SUITE 1307  
NEW YORK, NY  
212-684-7788

**LOS ANGELES**  
12015 MORA DR., UNIT 1  
SANTE FE SPRINGS, CA  
562-903-7090

**DALLAS**  
4885 ALPHA RD., SUITE 155  
FARMERS BRANCH, TX  
817-481-2600

**HOUSTON**  
1205 W. LOOP NORTH, SUITE 100  
HOUSTON, TX  
713-688-7216

**WASHINGTON D.C.**  
1738 ELTON RD., SUITE 304  
SILVER SPRING, MD  
301-408-0600

**ATLANTA**  
2030 POWERS FERRY RD., SUITE 230  
ATLANTA, GA  
770-984-9047

**BOSTON**  
850 SUMMER STREET  
BOSTON, MA  
617-269-7600

**DETROIT**  
2384 FRANKLIN ROAD  
BLOOMFIELD HILLS, MI  
248-745-9990

**ST. LOUIS**  
3204 MORGAN FORD ROAD  
ST. LOUIS, MO  
314-771-6696

**DENVER**  
601 S. BROADWAY, SUITE 1  
DENVER, CO  
303-738-1001

**PORTLAND**  
1001 SE WATER AVE., SUITE 400  
PORTLAND, OR  
503-222-2364

**SEATTLE**  
829 S. FIDALGO  
SEATTLE, WA  
206-767-0412

**CINCINNATI**  
2226 GILBERT AVENUE  
CINCINNATI, OH  
513-221-4800

**NORTHERN CALIFORNIA**  
2528 QUME DR., SUITE 6  
SAN JOSE, CA  
415-637-5939

**TORONTO**  
200 COCHRANE DR., UNIT 4  
MARKHAM, ONT  
CANADA  
905-475-0115

**VANCOUVER**  
110-4611 #6 ROAD  
RICHMOND, BC  
CANADA  
604-272-4401

Product finishes that are shown are reproduced as faithfully  
as possible within the limitations of the printing process.